



International Boundary and Water Commission United States Section

For immediate release
February 5, 2024

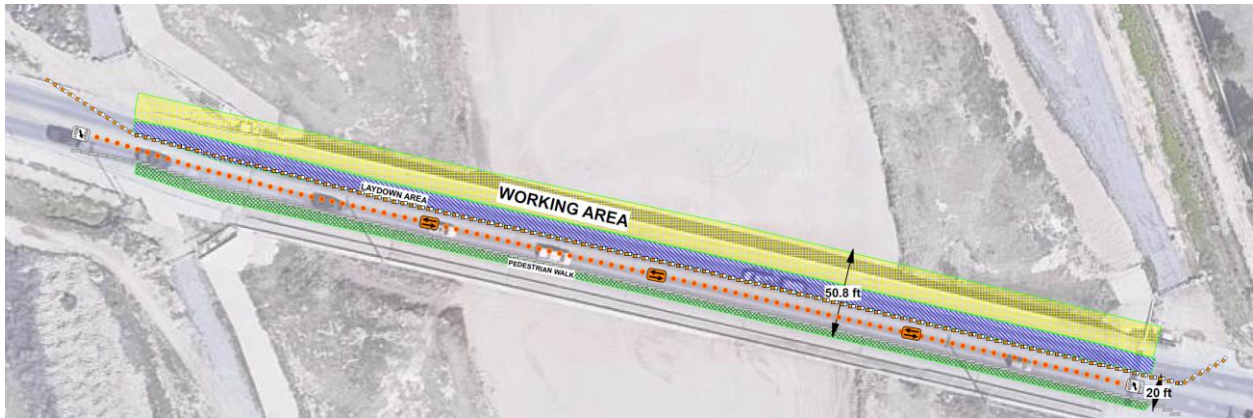
UPPER VALLEY LEVEE REHABILITATION IN EL PASO: FINAL TRAFFIC CHANGES AT COUNTRY CLUB ROAD BRIDGE CROSSING RIO GRANDE

The United States Section of the International Boundary and Water Commission (USIBWC) is required to perform an additional phase of bridge work and adjust traffic one more time for the temporary two-lane traffic in El Paso, Texas, along the Country Club Road Bridge that crosses the Rio Grande to complete final construction of the new floodgate systems at the center of the bridge. The shift is tentatively scheduled to occur the week of February 5, 2024, but may occur the following week of February 12, 2024. These new systems are part of the ongoing rehabilitation of the flood control levee from Borderland Road to Racetrack Drive.

The construction for a new stoplog, or hydraulic engineering control system, on both ends of the Country Club Bridge requires demolition, removal of the existing east side floodgate, and reconstruction of pavement. The construction for these new stoplog systems on both ends of the Country Club Bridge has been ongoing since October 2023, and the work will transition to the final phase of construction and traffic control. The traffic control setup allows for the bridge to remain open to vehicular and pedestrian traffic during construction. The work is scheduled to be completed by February 29, 2024.

The traffic lanes will be shifted from the current route along the south side of the Country Club bridge to separate traffic lanes with the westbound lane along the shoulder of the north side

of the bridge so that work may be completed on the center of the bridge. The illustrations below show the traffic patterns during each phase.



Phase 3: Current Temporary Traffic Lanes at South



Phase 4: Traffic Lanes Separated (Westbound Lane Shifts to North Shoulder)

The levee rehabilitation project extends approximately 0.6 miles along the west levee of the Rio Grande from Country Club Road to the Nemexas Drain and approximately 8.4 miles along the east levee of the Rio Grande from upstream Borderland Road to downstream of Racetrack Drive. USIBWC contractors are placing impervious clay on the levee and a deployable stoplog system at the Country Club Road bridge to improve flood protection.

Construction for the whole project should be completed by March 2025.

For more information:

Frank Fisher, Public Affairs Chief
(915) 494-6027
frank.fisher@ibwc.gov