



International Boundary & Water Commission

San Diego Field Office Update

Citizens' Forum
July 12, 2023

Morgan Rogers
Area Operations Manager
U.S. Section- IBWC



International Boundary and Water Commission (IBWC)

- Independent federal agency established 1889
- Mission – Administer the boundary and water Treaties between the US and Mexico
- Organization -
 - US & Mexican Sections IBWC
 - US Section IBWC (USIBWC) HQ in El Paso, TX
 - Field Offices along the border
 - Assets, operations & management...





International Boundary and Water Commission (IBWC)

Assets, Operations & Management Responsibilities

- Water deliveries – Rio Grande and Colorado Rivers
- Levees – over 500 miles
- Flood plains –34,900 acres
- Dams & hydroelectric power plants
 - 2 international dams & hydroelectric plants
 - 5 diversion dams
- International bridges and boundary demarcations
 - 2 international bridges
 - 800 monuments, markers, and bouys
- International wastewater treatment plants
 - San Diego
 - Nogales, AZ





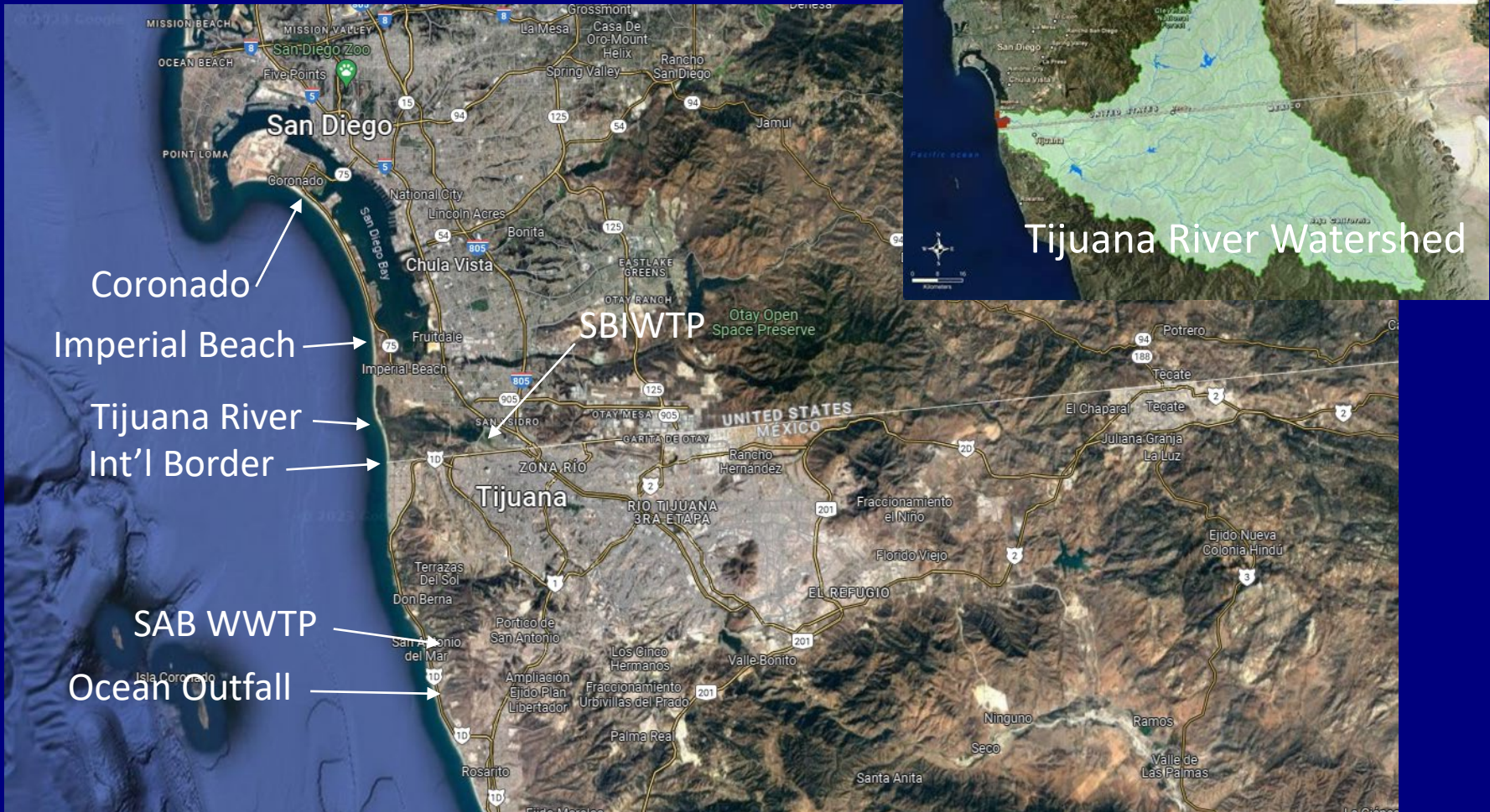
San Diego Field Office USIBWC

- 2995 Clearwater Way, San Diego, CA 92154 (San Ysidro) [5 CA 92154](#)
- Area of Operations - San Diego towards Yuma
- Primary Focus of Operations
 - South Bay International Wastewater Treatment Plant (SBIWTP)
 - Prevention and response to transboundary wastewater flows



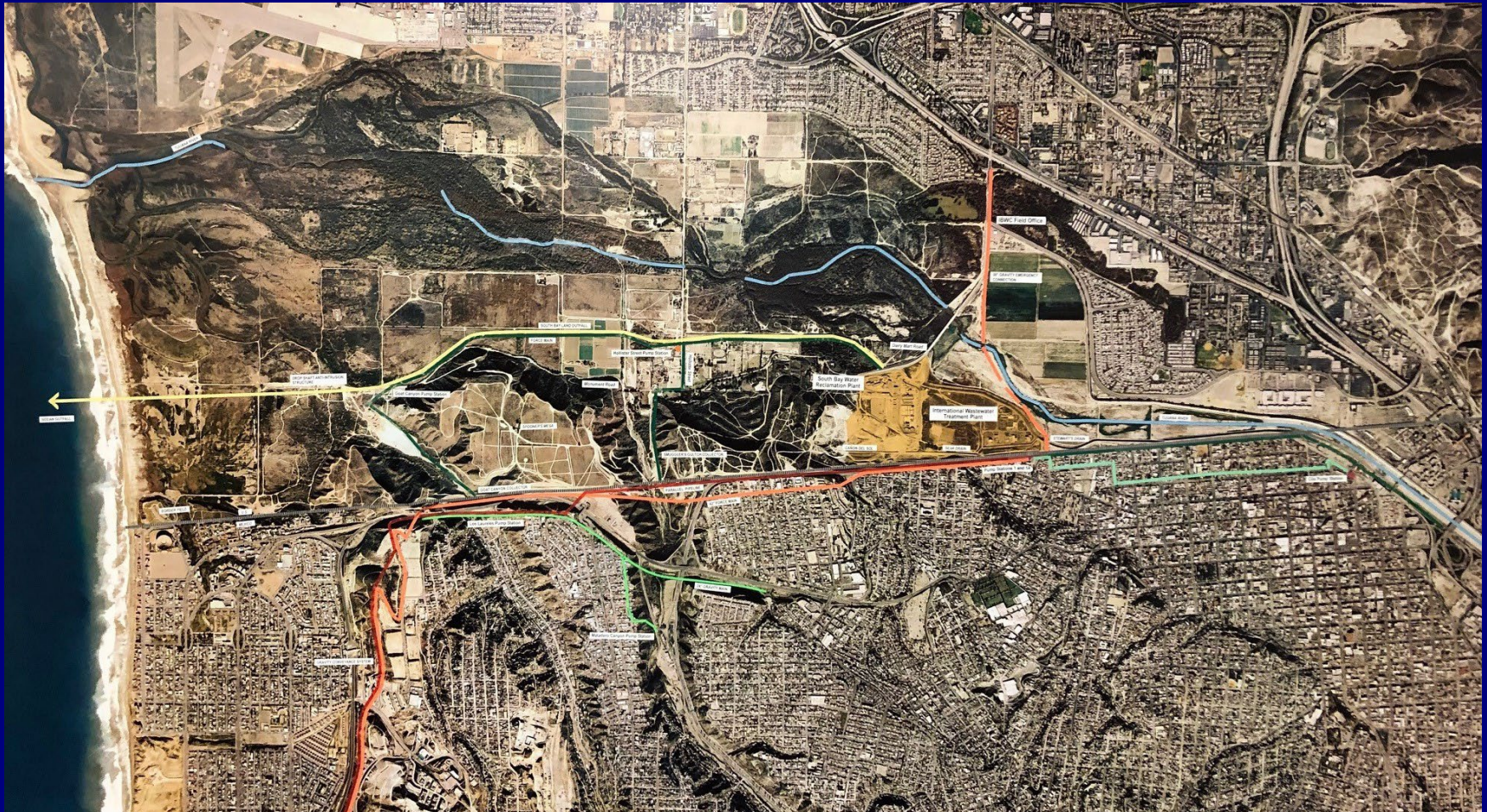


San Diego - Tijuana Region





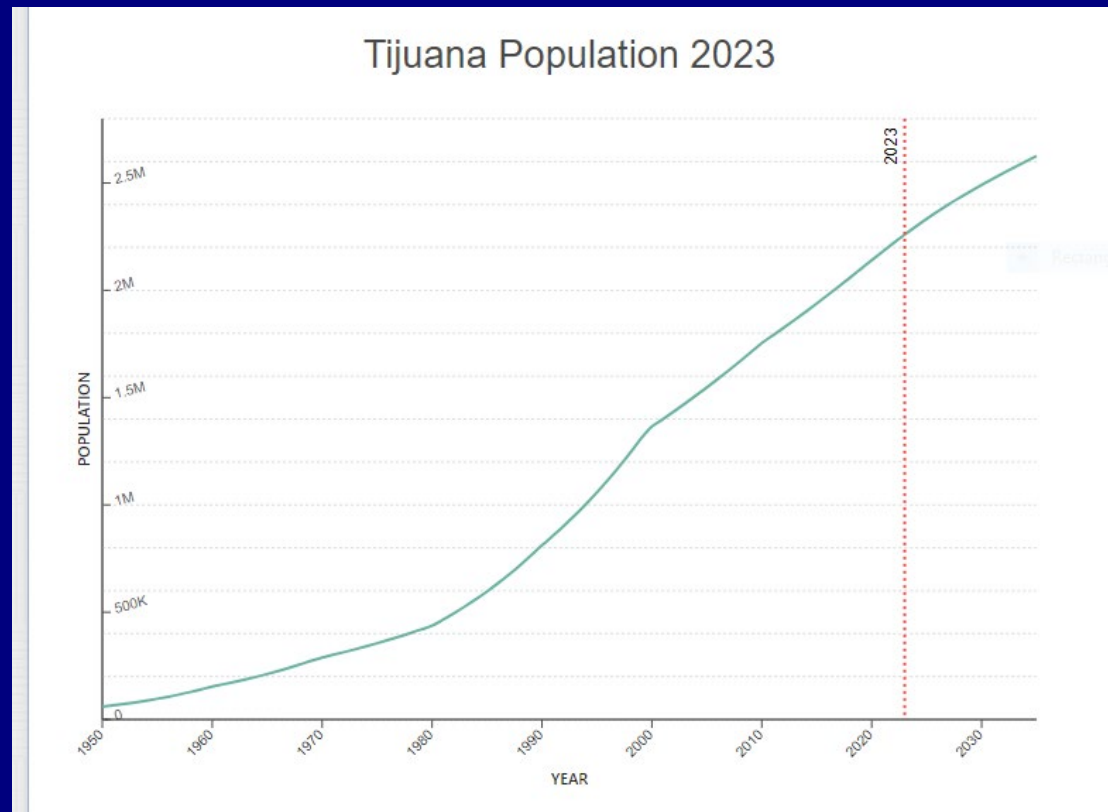
San Diego - Tijuana Wastewater System





US - Tijuana Wastewater System Challenges

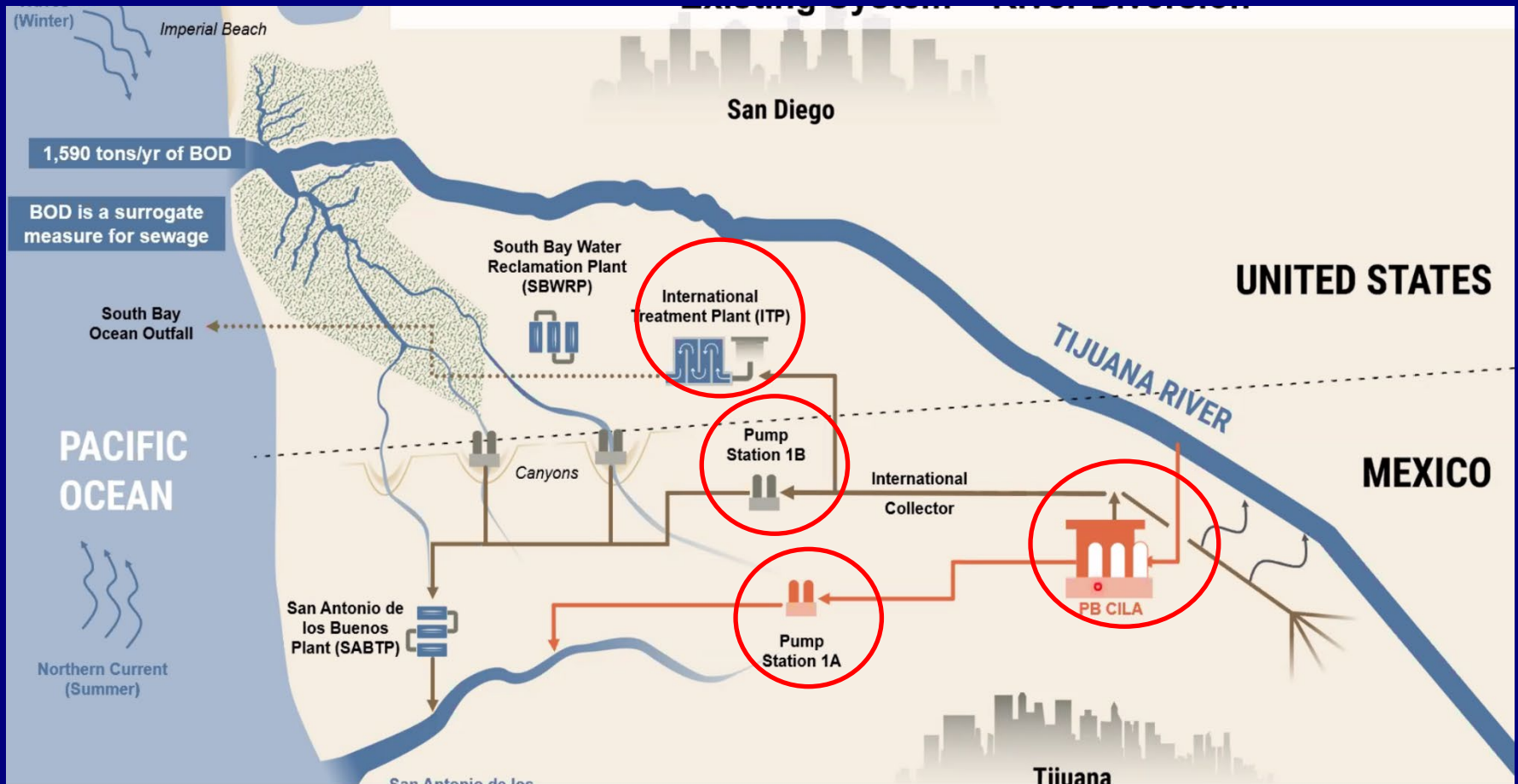
- Population growth - infrastructure not keeping up
- 1950 – 60,336
- 2000 – 1,364,918
- 2020 – 2,140,398 (57%)
- 2035 – 2,626,333 (22%)





US - Tijuana Wastewater System Challenges

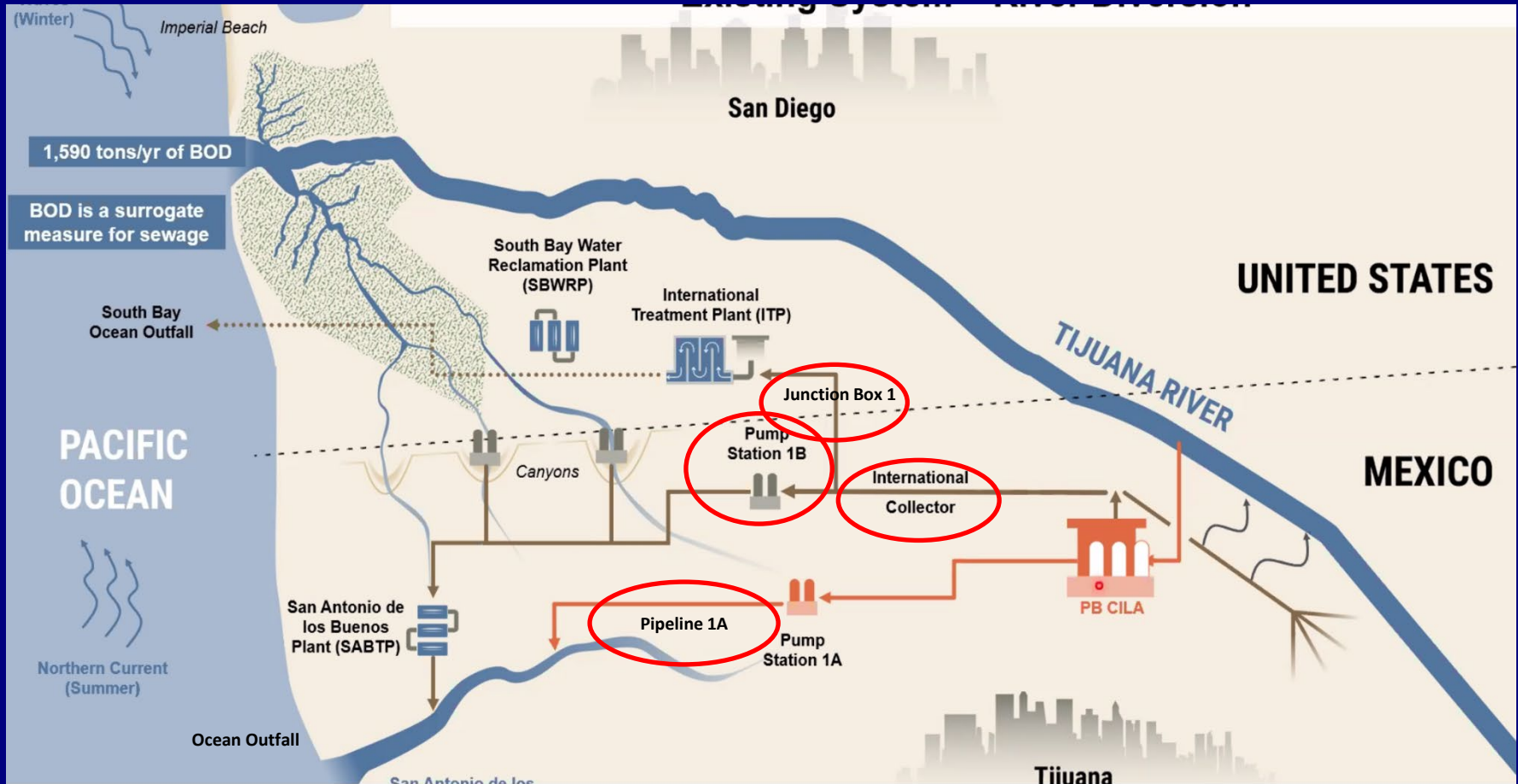
- Infrastructure Interdependencies





US - Tijuana Wastewater System Challenges

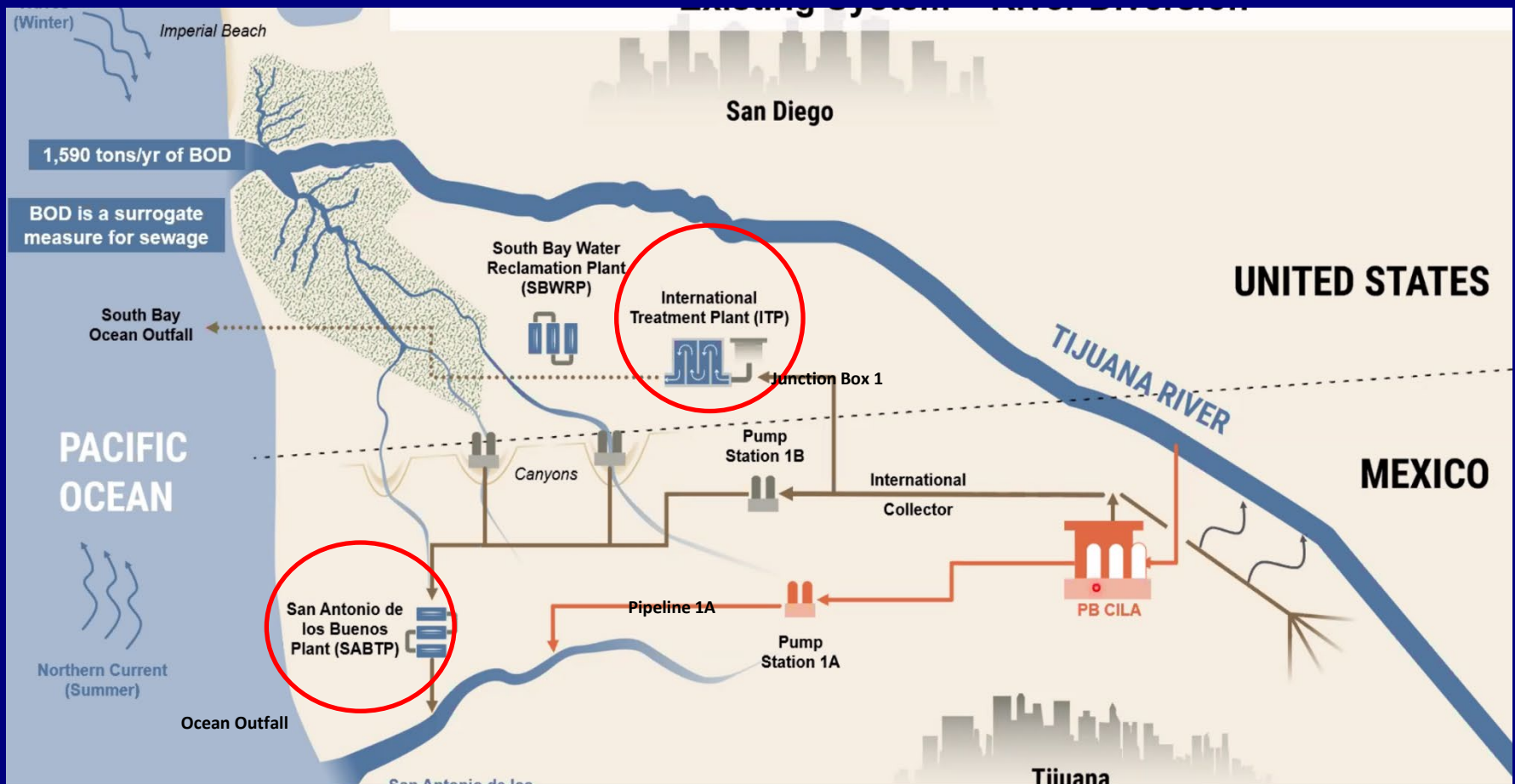
- Infrastructure **FLOW** weak points





US - Tijuana Wastewater System Challenges

- Infrastructure **WATER QUALITY** weak points





US - Tijuana Wastewater System Challenges

South Bay International Wastewater Treatment Plant

- Design/Permit 25 MGD
- Average 29 MGD Aug 22 – July 23
- Primary treatment out of service



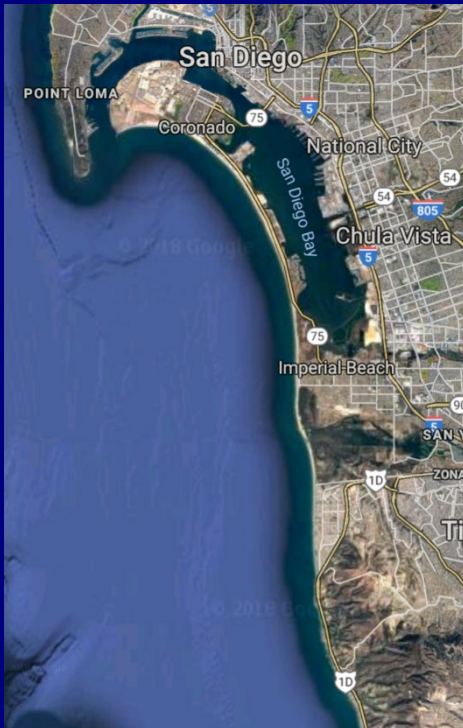
Monthly Average Effluent Flow (MGD)

| | |
|-----------|------|
| July 2022 | 23.6 |
| Aug 2022 | 31.4 |
| Sept 2022 | 33.7 |
| Oct 2022 | 32.5 |
| Nov 2022 | 31.5 |
| Dec 2022 | 28.6 |
| Jan 2023 | 27.5 |
| Feb 2023 | 29.2 |
| Mar 2023 | 24.9 |
| Apr 2023 | 21.2 |
| May 2023 | 26.7 |
| June 2023 | 29.4 |
| July 2023 | 31.9 |



US - Tijuana Wastewater System Challenges

- Infrastructure not capable of capturing and treating Tijuana generated wastewater
- 35-40 MGD discharged directing into the ocean south of Tijuana





San Diego – Transboundary Flows





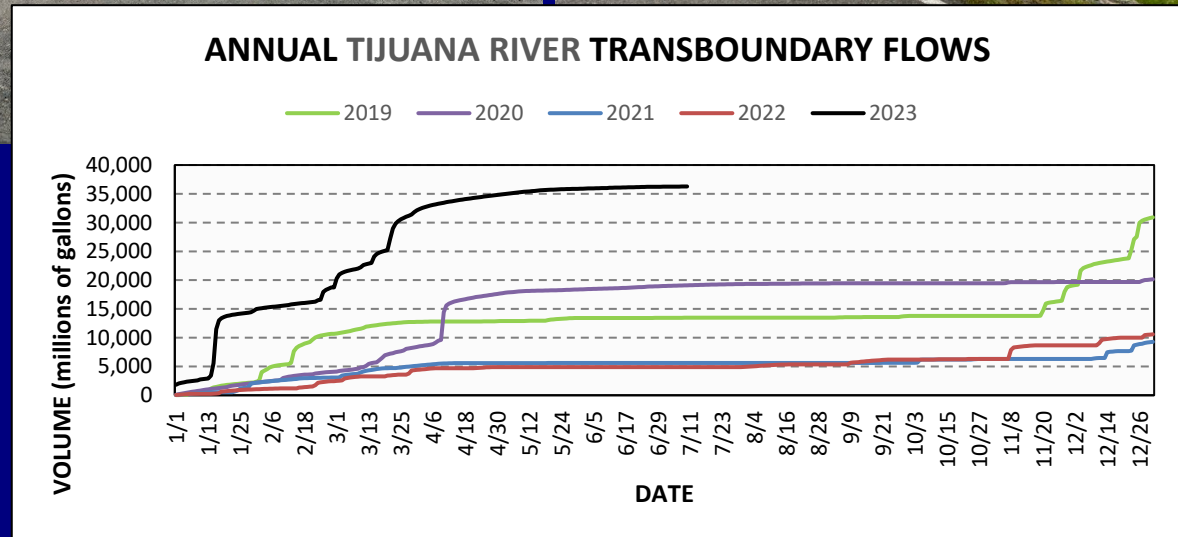
Transboundary Flows

- Tijuana River



Annual Flows – Billion Gallons

- 2020 - 19.8
- 2021 - 9.2
- 2022 - 10.2
- 2023 - 32.7





Transboundary Flows

- Canyon collectors



| YEAR | GALLONS | CAUSE |
|------|------------|----------------------------|
| 2023 | 8,178,000 | SAB Pipeline Break/Rain |
| 2022 | 57,012,000 | JB1, PB1A/B Pipeline Break |
| 2021 | 8,234,000 | PB1, Various |



Transboundary Flows

- Canyon collectors – July 11, 2023



Stewart's Drain



Silva Drain



Transboundary Flows

- Canyon collectors – July 11, 2023



Canyon Del Sol



Smugglers' Gulch



Goats Canyon



Transboundary Flows Response & Prevention

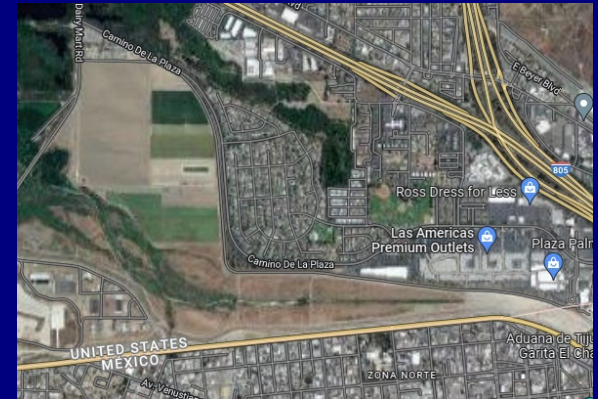
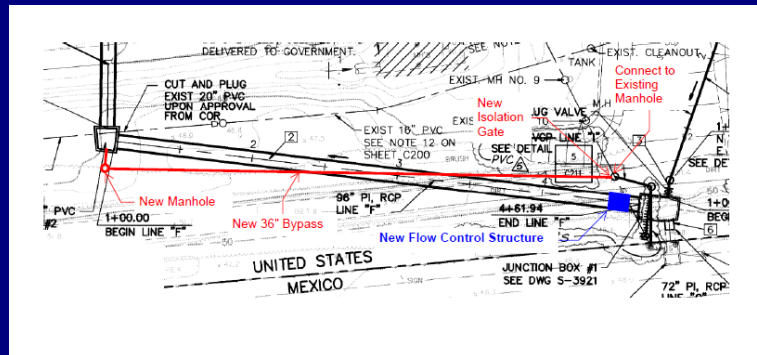
- Sediment berm to contain Tijuana River dry-weather flows
- Pumps for extra collector containment and diversion capacity





USIBWC Projects

- JB1 rehabilitation (FY23)
- Sediment removal
- Levee restoration





Minute 328 Projects

- United States
 - Expand/Rehab SBIWTP
- Mexico
 - Rehabilitate PBCILA
 - Rehabilitate PB1 (PB1A & PB1B)
 - Rehabilitate International Collector
 - Repair Pipeline PB1A
 - Reuse Arturo Herrera & La Morita treated wastewater
 - Reconstruct SAB wastewater treatment plant to 18 MGD capacity





For additional information, contact:

Morgan Rogers
Area Operations Manager
U.S. Section- IBWC

(619) 662-7601

Morgan.Rogers@ibwc.gov